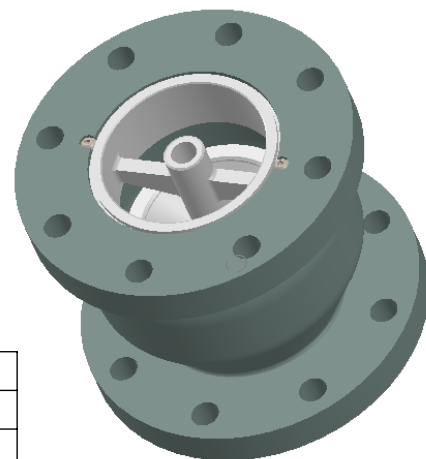


MAX NON-SHOCK
WORKING PSI

TEMPERATURE	PSI
150 °F	400
200 °F	370



LEAD FREE

The wetted surface of this product contacted by consumable water contains less than one quarter of one percent (0.25%) of lead by weight. Material complies with state codes and standards, where applicable, requiring reduced lead content.

Notes:

Valve is designed for liquid service only. Install 5 to 10 pipe diameters downstream from pump discharge or elbows to avoid flow turbulence. The intake side of CVO 900 series check valves must be mated to a ANSI B16.5 flat faced steel flange. The discharge side can be mated to a ANSI B16.5 flat face steel flange or a wafer style butterfly valve without the use of spools or adapters.

Valve complies with MSS-SP-125-2010.

2-1/2" valve trim is threaded into body.



FOR ADDITIONAL FLOW STRAIGHTENING
SEE THE VANE FLEX AT
www.metralflex.com/vaneflex

Qty.	Part Number	Size I.D. (in)	A (in)	B (in)	C (in)	D (in)	E (in)	Cv*	Weight (lbs)	Bolt Size (in)	Number Of Bolts
	CVOSS9525	2-1/2	7-1/2	5-1/2	5-7/8	1	1-7/16	110	25	3/4	8
	CVOSS953	3	8-1/4	6	6-5/8	1-1/8	1-3/8	155	34	3/4	8
	CVOSS954	4	10	7-1/4	7-7/8	1-1/4	1-3/4	278	59	3/4	8
	CVOSS955	5	11	8-1/2	9-1/4	1-3/8	2	435	74	3/4	8
	CVOSS956	6	12-1/2	9-3/4	10-5/8	1-7/16	2-1/2	625	100	3/4	12
	CVOSS958	8	15	12-1/2	13	1-5/8	3-1/4	1115	177	7/8	12
	CVOSS960	10	17-1/2	15-1/2	15-1/4	1-7/8	4-1/4	1770	255	1	16

*Cv is the number of U.S. gallons/minute of 60 °F water that will flow through a valve with 1 PSI of pressure drop across the valve.

PROJECT INFO

CUSTOMER: _____

PROJECT: _____

ENGINEER: _____

REV.	1	DRAWING REVISED	DATE 10/14/2013
		2323 W. HUBBARD ST. CHICAGO, IL 60612 TEL: 312-738-3800 FAX: 312-738-0415 WWW.METRAFLEX.COM	
MODEL CVO900-250-10-SS 2.5" - 10" 250# GLOBE STYLE SILENT CHECK VALVE W/ SS TRIM			
DRAWN BY: DKISH		DATE: 8/27/2013	
APPROVED: JC		DATE: 8/27/2013	
SCALE:	NONE	DRAWING NUMBER:	CVO900-250-10-SS